

## item number / CE.STC24.10

CERIAN Flexi LED COB strip lights 24VDC.

### Application

residential or commercial indoor and outdoor space

### Design Specifications

#### constant voltage 24Vdc, flexible LED strip (10W)

- High-density COB LEDs;
- Linear lighting, without light spot, soft and uniform luminance
- High CRI, high brightness and high efficiency;
- High temperature resistance , long life;
- Luminous surface width of 4.0±0.2mm;
- 3 years or 13,000 hours, whichever comes first.
- Suitable for indoor use as decorative lighting, such as corner decoration and contour lighting in KTV, shopping mall, cabinet and etc.



interior and outdoor used

### Performance

Warm white- Cool white- red- green- blue

Led COB strip lights

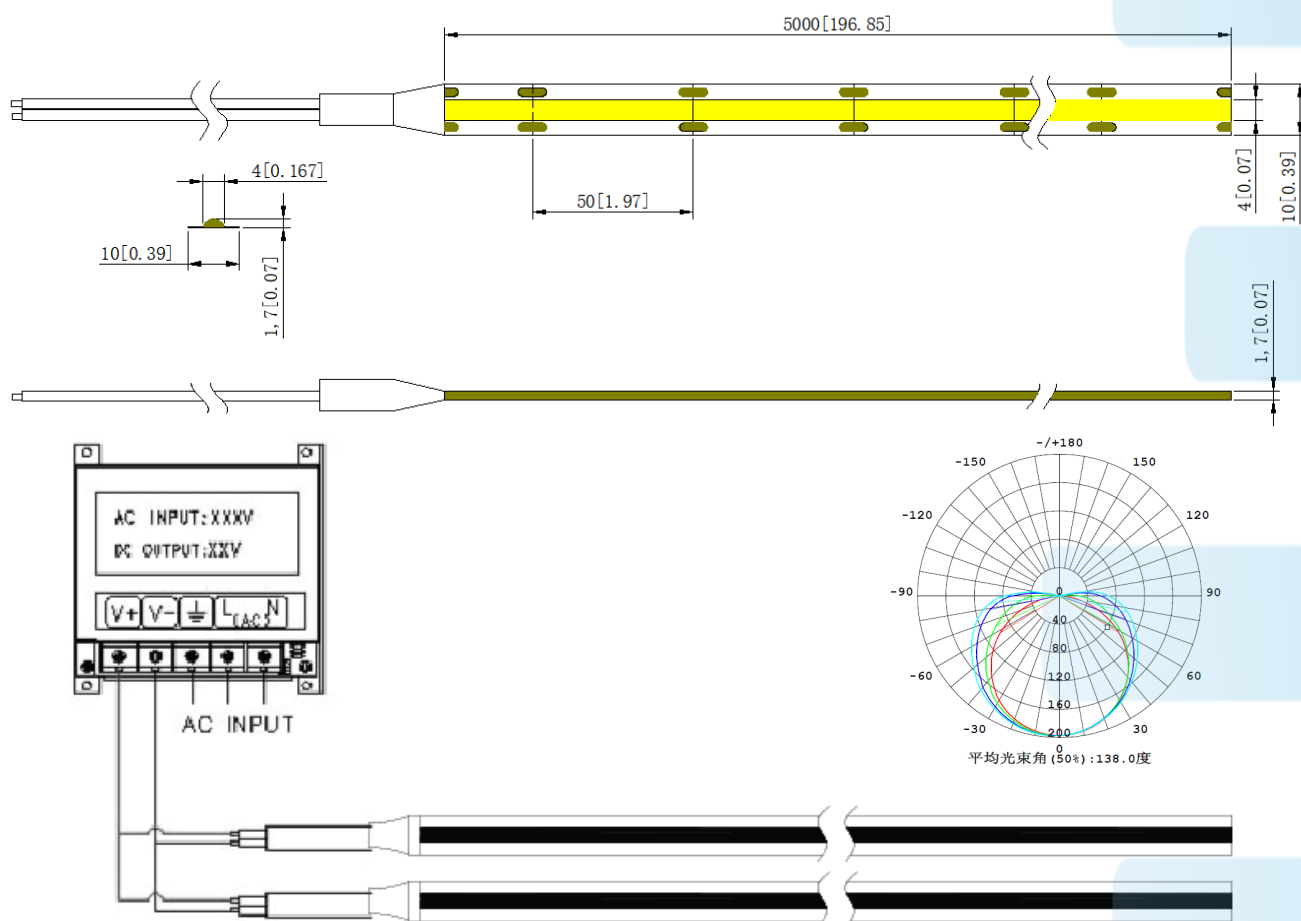
### Technical Specification

#### Optical and Electrical Parameters:

P/N	LED Color	(K)	I	SDCM	Beam Angle(°)	Luminous Flux (lm/m)	Luminous Efficacy (lm/w)	Working voltage (VDC)	Working current(mA)		Power (w)	
									1m	5m]	1m	5m]
CE.STC24.10-3.5K	white	3500	≥90	3	140	900	90	24	415	1666	10	40
CE.STC24.10-6.5k	white	6500	≥90	3	140	950	95	24	415	1666	10	40
CE.10.STC24. 10-3.5k	white	3500	≥90	3	140	900	90	24	415	1666	10	40
CE.10.STC24. 10-6.5k	white	6500	≥90	3	140	950	95	24	415	1666	10	40
CE.10STC24. 10-3.5KIP	White	3500	≥90	3	140	900	90	24	415	1666	10	40
EOL.CE.10STC24. 10-6.5KIP	White	6500K	≥90	3	140	950	95	24	415	1666	10	40

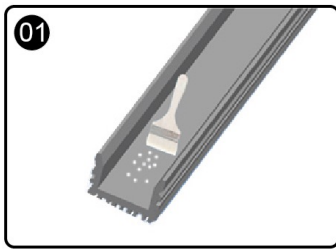
## Optical and Electrical parameters

P/N	IP Grade	Operating Temp		Storage Temp		Standard cascading length		Max. cascading length		COB Qty (pcs/m)
		(°C)	(°F)	(°C)	(°F)	(m)	(inc h)	(m)	(inc h)	
CE.STC24.10-3.5K	IP20	-25~+60	-13~+140	-25~+70	-13~+158	5	196.8	5	196.8	320
CE.STC24.10-6.5k	IP20	-25~+60	-13~+140	-25~+70	-13~+158	5	196.8	5	196.8	320
CE.10.STC24.10-3.5k	IP20	-25~+60	-13~+140	-25~+70	-13~+158	5	196.8	5	196.8	320
CE.10.STC24.10-6.5k	IP20	-25~+60	-13~+140	-25~+70	-13~+158	5	196.8	5	196.8	320
CE.10STC24.10-3.5K IP	IP20	-25~+60	-13~+140	-25~+70	-13~+158	5	196.8	5	196.8 </td <td>320</td>	320
CE.10STC24.10-6.5K IP	IP65	-25~+60	-13~+140	-25~+70	-13~+158	5	196.8	5	196.8	320

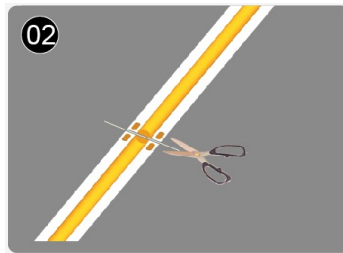


## Dimensions

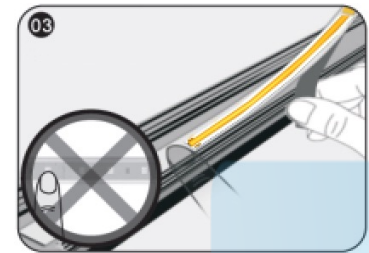
Packaging Information:											
P/N	Qty (m/reel)	Qty (m/carton )	Total Qty (m)	Total weight		Outer carton size					
				(kg)	(lb)	length		width		height	
						(mm)	(inch)	(mm)	(inch)	(mm)	(inch)
EOL.CE.STC24.10-3.5K	5	200	200	6.73	14.8	395	15.6	215	8.5	420	16.5
EOL.CE.STC24.10-6.5k	5	200	200	6.73	14.8	395	15.6	215	8.5	420	16.5
EOL.CE.10.STC24.10-3.5k	5	400	400	6.73	14.8	485	19.1	215	8.5	495	19.5
EOL.CE.10.STC24.10-6.5k	10	400	400	11.8	26	485	19.1	215	8.5	495	19.5
EOL.CE.10STC24.10-3.5K IP	10	400	400	13.6	29.9	485	19.1	215	8.5	495	19.5
EOL.CE.10STC24.10-6.5K IP	10	400	400	13.6	29.9	485	19.1	215	8.5	495	19.5



Clean the mounting surface



⦿ Calculate the needed length and cut off the extra length along cutting mark if necessary; if need to add wires, please weld them at the next location with printed mark.



⦿ While sticking strips, peel off the release paper of the tape step by step. Don't peel off all release paper at one time to avoid getting your strip in a mess.

△Notes: No pressing the LED bead!

### Declaration:

- If the external flexible cable of light box is damaged, please replace it by its manufacturer or its service agent or qualified person to avoid a hazard.
- The specific installation and cautions please refer to the user manual.
- The given data in this specification is based on our standard product. There may be existed slight difference compared with actual products.
- All Illustrations in this specification are for reference only.
- This product is subject to change or modify without prior notice.
- EMPIRE OF LIGHT PTY LTD reserves the right of final explanation for this specification.